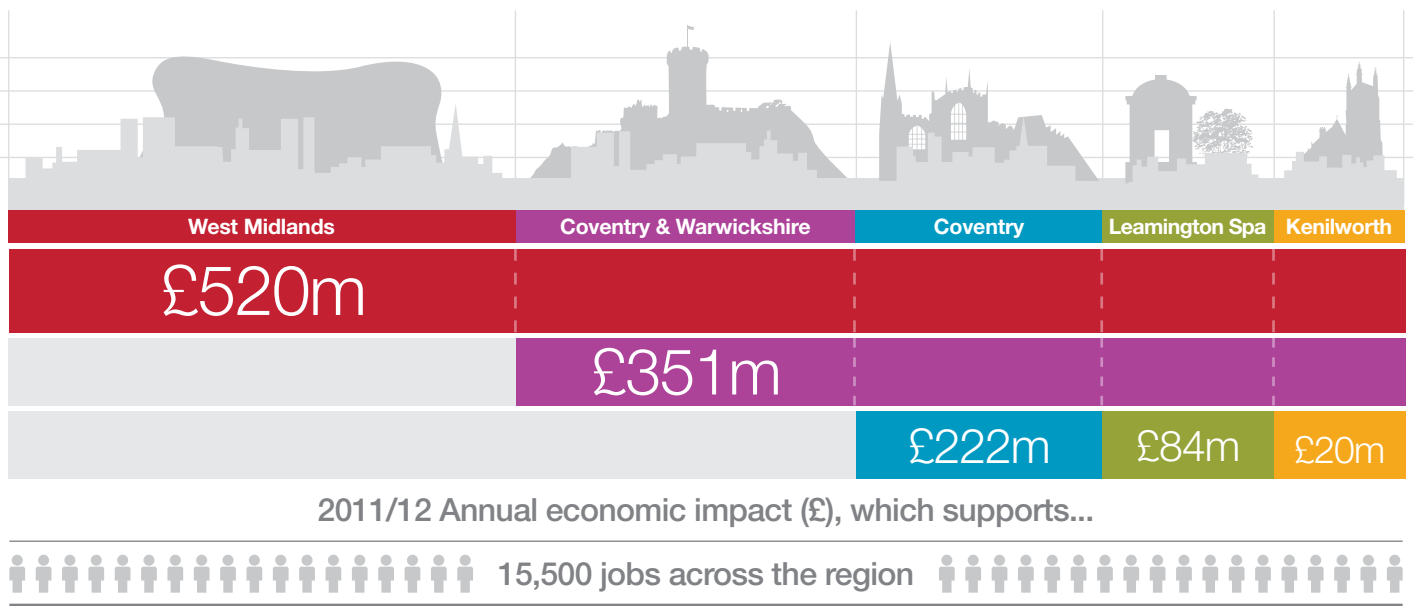


Your area Our impact

The University of Warwick's contribution to the region



Economic
impact



Innovation



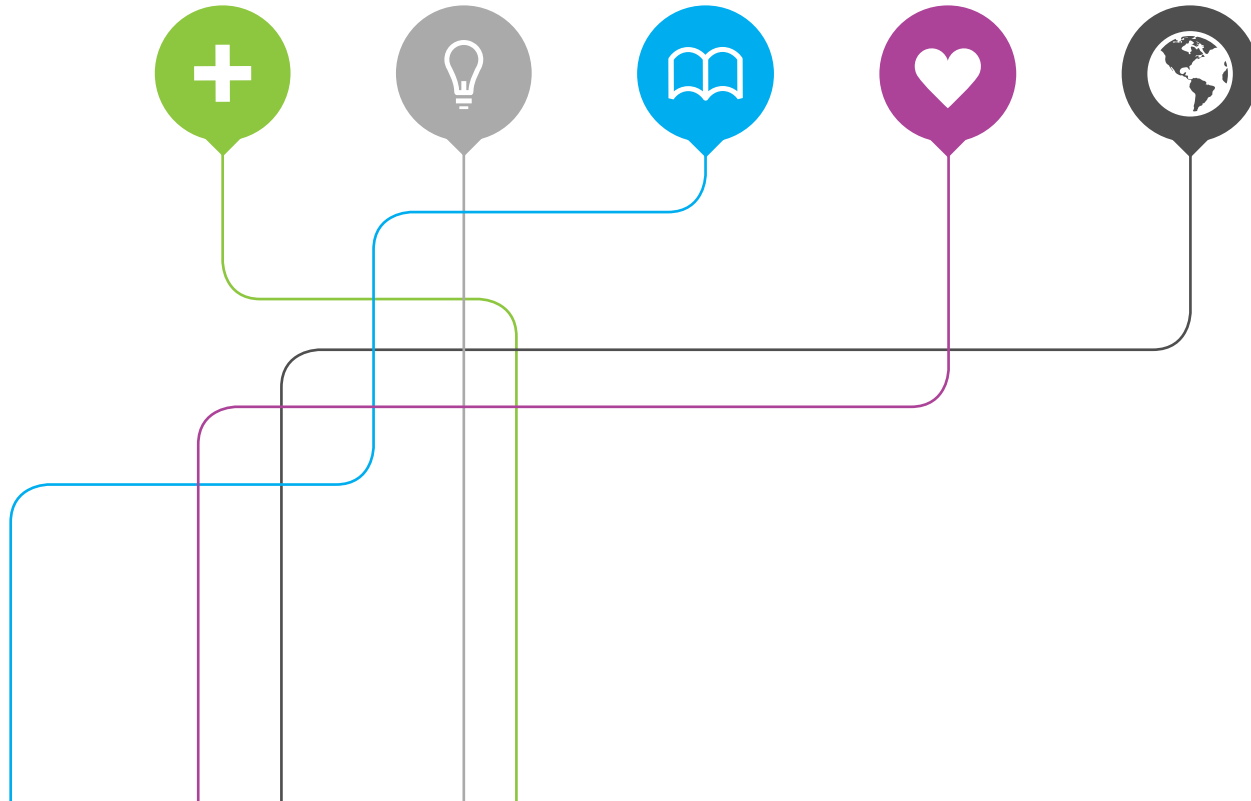
Education
& training



Culture
& community



Global
connections



The University of Warwick:

Making a contribution to our region



The University of Warwick is both globally and regionally focused. We believe that these are not conflicting aims. Indeed, quite the opposite. Our international reputation and global connections help us to ensure that our local communities benefit from the University's facilities and presence in the region. Our world-class Business School works with companies and entrepreneurs across the West Midlands and WMG continues to strengthen its relationships with major employers in Coventry and Warwickshire such as Jaguar Land Rover and Tata – attracting the very best talent to work and study in the local area. As a result, our excellent track-record of working alongside business is widely regarded as a blueprint for how to connect research, innovation and economic growth. However, it is the extraordinary wealth of people all working, studying and thinking at the University of Warwick that is our biggest contribution to the region and to local communities. This report sets out how our students and staff connect the University with our local areas through their ideas, ambitions and hard work. ”

Professor Nigel Thrift
Vice-Chancellor and President

A bit about us...

The University of Warwick is globally connected, forward-looking and entrepreneurial. We create new ways of thinking and achieving: making us stand out from our competitors and the more 'traditional universities' and creating an inspiring place to study and undertake research.

Warwick is one of the UK's great success stories. In less than fifty years since being founded we've become one of the UK's top ten universities and we're rapidly climbing the international league tables of world class universities.

In 2012, the University commissioned independent consultants SQW to undertake a study looking at the annual impact we had on our region between July 2011 and July 2012. The results of this highlighted five key areas in which the University makes a contribution to your area:



£440m

turnover in 2011/12, including international student fees of £83 million.



£55.2m

spending on buildings and physical improvements to campus in 2011/12.



4

major UK university league tables that, in 2012/13, ranked the University of Warwick as the best University in the Midlands.



 The University of Warwick



 Warwick Arts Centre



 International Digital Laboratory, Warwick Manufacturing Group



Economic impact

A driver of economic growth

The University directly spends around £306m in the West Midlands each year, and our staff and students further boost the regional economy with their expenditure.

When this is all added up, weighted for seasonal differences and indirect 'multiplier-effects', SQW estimated the total value of the University's economic impact in the region during 2011/12 to be worth £520m to the West Midlands. Within this total, we generated almost £351m in the Coventry and Warwickshire sub-region, £222m in the city of Coventry, £84m in Royal Leamington Spa and £20m in Kenilworth.

SQW calculated that this expenditure, combined with direct employment by the University, supports around 15,500 jobs (full-time equivalents) in the West Midlands, of which around 10,900 are in Coventry and Warwickshire.

These figures are based only on the University's direct financial expenditure and that of our staff and students. The economic impact of the University's presence in Coventry and Warwickshire is likely to be much greater – including financial benefits from international students, their friends and families visiting the area; attracting inward regional investment through our track-record of excellence in innovation and research; as well as our work with local schools and children. Much of this can't be quantified, but this report gives you a snapshot of how the University of Warwick has an impact on our region and local area.



4,739

jobs supported by the University in Coventry.



1,852

jobs supported by the University in Royal Leamington Spa.



214

jobs supported by the University in Kenilworth.



£11,347

the average value of each Warwick student's annual expenditure to our region's economy.





Innovation

A hub for world-leading research and creativity



University of Warwick Science Park

Now owned outright by the University, the Science Park provides a full range of support services to businesses in Coventry and elsewhere in the West Midlands. These services have benefitted over 1800 companies in the last eight years, attracted 24 businesses to the region, created 66 companies and safeguarded 291 jobs. The Science Park is currently home to 140 tenants on four sites.

Helping regional manufacturing thrive

WMG (formerly Warwick Manufacturing Group) has developed a close relationship with Jaguar Land Rover, a major employer in the region.

Jaguar Land Rover has located 180 of its research and development staff on campus as part of a programme which will generate £100m of collaborative research over ten years.

WMG have also led the Premium Automotive Research and Development Programme (PAR) designed to assist the automotive supply base in the region. An independent evaluation concluded that it has assisted 605 businesses, generated £55.5m in value added and safeguarded 5,496 jobs.



7th

best University in the UK for Research Excellence according to the UK Government.



£9m

of research projects commissioned by organisations in the West Midlands.



75

jobs and six new businesses created by WMG's SME team in the last year.



Paintbox has won a contract from BMW for the company's prestigious Rolls Royce operation. The contract is worth 100 million euros, will safeguard 100 jobs and create another 50. We won the contract in competition with companies in Germany and we believe that a significant factor that tipped the balance in our favour was the relationship with the University of Warwick and our access to the laboratory facilities of the Science City Research Alliance. ””

James Sharp,
Managing Director, Paintbox

Science City Research Alliance

Science City Research Alliance is a partnership between the Universities of Warwick and Birmingham. It was catalysed through an initial grant of £10m from Advantage West Midlands, and £1m from the Wolfson Foundation, for staff and set-up costs. A further £57m investment in the regional research infrastructure has also been provided. The work of the Alliance is focused on three high-growth technology sectors: Energy, Advanced Materials and Translational Medicine. It has created over 254 jobs, attracted additional research funding of £13m and helped more than 140 businesses.



A world-class business school for the region



Warwick Business School is ranked by the Financial Times as the UK's 3rd best business school in the UK and in Europe's top 15. Many of its courses are ranked amongst the best in the world – and it is a beacon of business research and innovation excellence for the Midlands. In 2012, WBS received £2.9m funding, along with other regional partners, to

launch a new Enterprise Research Centre to boost SME performance. It has also joined forces with the West Midlands Economic Forum to improve the way in which policymakers and businesses support the regional economy, helping produce more up-to-date and reliable data for a true picture of the West Midlands' economic performance.





Education & training

Providing education, skills and training of the highest quality

In 2012/13 the University of Warwick was ranked as the best University in the Midlands by all four major UK university league tables.

Warwick graduates are ranked as the number one target for the UK's top recruiters and account for 3% of the West Midlands' population with NVQ Level 4 qualifications and above, a significant proportion of the region's highly skilled labour force.

University innovation helping improve the health of the region

In 2012, the University of Warwick, GE Healthcare, University Hospitals Coventry and Warwickshire NHS Trust (UHCW) and Coventry City Council joined forces to create the Warwick Healthcare Partnership. The Partnership will seek solutions to the chronic diseases responsible for millions of deaths worldwide each year. The new consortium brings together expertise from academia, industry, medicine and the local community, to address the key health problems that affect resource-poor communities both locally and overseas.

In 2009 the Clinical Trials Unit building was completed at Gibbet Hill at a cost of £400m. The Unit now boasts 24 separate trials across its four major work streams of musculoskeletal conditions including injury prevention and management, cancer, clinical trials methodology and systematic reviews. This resource is also credited with raising the quality of clinical practice in the local area.



23,226

graduates registered as still living in the West Midlands. Approximately 14% of our alumni.



520

Warwick Medical School students worked in the region's hospitals and GP surgeries in 2011/12. University teaching hospitals also help keep talented graduates working in the local area after they finish their studies. The University's association with our local hospitals helps attract world-leading consultants and medical researchers to the region, whose expertise directly benefits local people through cutting-edge treatment and care.



WMG
Academy for Young

engineers

In 2014, the University of Warwick will open the WMG Academy for Young Engineers. It will be a brand new school and part of a family of University Technical Colleges – schools for 14–18 year olds which are led by businesses and a university. The WMG Academy will take all that is good from mainstream education and add in a host of skills which will prepare young people from the local area for employment or Higher Education. A key feature of the curriculum will be a close working relationship with local and national

employers. They will be setting the Academy's learners technical projects or 'commissions' which are based on the day-to-day problems and situations they have to resolve in their companies. The University is already working with Jaguar Land Rover, National Grid, SCC, Prodrive, Ricardo, Automotive Insulations, Squires Gears, Dassault Systemes and Tata Motors, and hope that many more businesses will also join us.



In 2009 the Clinical Trials Unit building was completed at Gibbet Hill at a cost of £400m.





Global connections

Bringing a global reputation and international connections

Through our global reputation and international connections, the University of Warwick brings significant benefits to the regional economy and our local communities.

The role universities play in attracting inward investment is well known. In Warwick's case, the relationship between WMG, Jaguar Land Rover and Tata has helped strengthen investment in advanced automotive manufacturing in Coventry and Warwickshire. The SQW report concluded that 'the presence of a major inward investor like Tata [at the University] gives a positive signal to other major firms to consider investing and potentially locating in the West Midlands'. An example of this is the £100m investment being made by Jaguar Land Rover and Tata and the UK Government for the development of the National Automotive Innovation Campus at the University. This state-of-the-art new building on Warwick's campus was announced at the end of 2012.



8,350

Warwick is one of the UK's most culturally diverse universities, with 8,350 international students from 72 different countries on campus in 2011/12.



\$5.5bn

the projected economic activity worldwide from CUSP research and new technologies.



The Center for Urban Science and Progress (CUSP) – connecting the University of Warwick to New York

In 2012 New York's Mayor Michael R. Bloomberg announced that Warwick would be the only European university involved in a consortium of world-class universities and multinational corporations that would create a brand new campus in downtown Brooklyn. The Centre for Urban Science and Progress will use cutting-edge research techniques like 'living laboratories' and real-world data to address the major challenges facing cities across the globe. Warwick's involvement will connect the region to this ground-breaking initiative, helping policymakers better understand how cities can deliver services more effectively, efficiently, and sustainably, while keeping their citizens safe, healthy, prosperous, and well-informed.



National Automotive Innovation Campus, a £100m building investment due to be built on the University's Campus.

Warwick is also one of the UK's most culturally diverse universities, with 8,350 international students from 72 different countries on campus in 2011/12.

Our international students make up 40% of all Warwick Volunteers, and organise events like One World Week, which, with over 200 student volunteers, is arguably the world's largest student-run international event.

In addition to direct economic benefits to regional tourism created by visiting families and friends, our international students act as ambassadors for the region and local area. Over 45,000 international alumni are resident in 193 countries and 83% of our international students would recommend the University of Warwick – higher than the national average.



The NAIC builds on Tata Motors European Technical Centre's long-standing relationship with WMG. It showcases the kind of academic and industrial partnership that will help the UK to be a destination of choice for inward investment in high value-added automotive R&D.

Nick Fell, Director and Head of the Tata Motors European Technical Centre



45,000

international alumni of Warwick resident in 193 countries.





Culture and community

A cultural centre that supports the local community

The University of Warwick is at the heart of its local community – our staff and students live, study and work across the region. Warwick Volunteers is one of the UK's largest and most popular student volunteering schemes. It attracts 2500 registrants each year and its mentoring scheme alone has been estimated to have a social-economic worth of £1m to the local community.



Warwick Volunteers in Leamington Spa

In 2012/13 Warwick Volunteers ran 23 different projects with 11 schools in Leamington Spa. One of the Leamington schools that Warwick Volunteers have developed strong relationships with is Sydenham Primary School. Reading volunteers have substantially increased children's reading levels and also built their aspirations, confidence and self-esteem by providing them with positive role models.



Please send my thanks to all the wonderful volunteers who have helped us this term. We have been very spoiled and feel that your reading volunteers have really helped our children's progress and that your club volunteers (Bake it up, Aliens and Politics and Cricket) have expanded the children's horizons and given them great opportunities that we would not have been able to provide. Thank you all very much.

Carla, Headteacher at Sydenham Primary School

Sporting facilities open to the community

Most of Warwick Sport's 5* facilities are open to the public, with our athletics track and sports fields used by local schools for their summer sports days.

Godiva Harriers Athletics Club is based at our Westwood track and last year Britain's Olympic women's football squad trained at the University, which also hosted Olympians from numerous other countries and sporting disciplines. We made a major contribution to bringing the International Olympic Committee to Coventry. This resulted in the city hosting the London Olympics 2012 volunteer and training events and football training in Coventry.

Warwick's new £2.5 million Tennis Centre, funded by the University of Warwick, the Lawn Tennis Association, Sport England West Midlands and an anonymous benefactor, offers a comprehensive adult and junior programme for players of all standards. The Centre is the only one of its kind in Coventry and Warwickshire to offer access to the public without having to take up a membership.



The University of Warwick's Tennis Centre



£1.6m

the amount the University has committed to spending annually on outreach, widening participation and improving access by 2016.



£200,000+

funding from the University for the Connect to Kenilworth cycling route.



2,500

registrants for Warwick Volunteers every year.



£27.7m

estimated total value to the local economy of Warwick Arts Centre.



62%

of visitors to Warwick Arts Centre come from Coventry and Warwickshire.



Warwick Arts Centre

Warwick Arts Centre is the second largest arts centre in the UK. It hosted 494 individual performances, with an annual audience of 270,000 in 2010/11.



The University of Warwick's impact in the region

Culture & community



Our campus is a cultural centre that supports the local community.



Education & training



Provides education, skills and training of the highest quality.

Economic impact



A driver of economic growth.

Innovation



A hub for world-leading research and creativity.

Global connections



Brings a global reputation and international connections.

Find out more



For more information on the University of Warwick and the report by independent consultants SQW, please visit:
www.warwick.ac.uk/yourarea

University of Warwick
Coventry, CV4 8UW
Tel +44 (0)24 7615 1041



Scan me to find out more